

**SIMPLY SOFAS**®

SO FA, SO GOOD®

# NEW LAUNCHES & TRENDS

**MILAN DESIGN WEEK 2023** *PLUS the latest Colour, Material, and Design influences in the world of Interior Design*



**SIMPLY SOFAS**<sup>®</sup>

SO FA, SO GOOD<sup>®</sup>

OUR PARTICIPATING BRANDS  
AT MILAN DESIGN WEEK

---

**Molteni & C**

Italy 1934

**PIANCA**

Italy 16th century

**reflex**

Italy 1940

**NATUZZI**<sup>ITALIA</sup>

Italy 1959

**KOINOR**

Germany 1950

**NICOLETTIHOME**<sup>®</sup>

Italy 1967

**CALIA**  
ITALIA

Italy 1965

**fama**

Spain 1970

**W.SCHILLIG**  
Germany 1949

**BONALDO**

Italy 1936

**calligaris** 

Italy 1923

**Tonin**  
CASA

Italy 1967



Italy 1951

**ezpeleta**<sup>e</sup>

Portugal 1935



THE INNOVATORS OF COMFORT™

Norway 1934

---

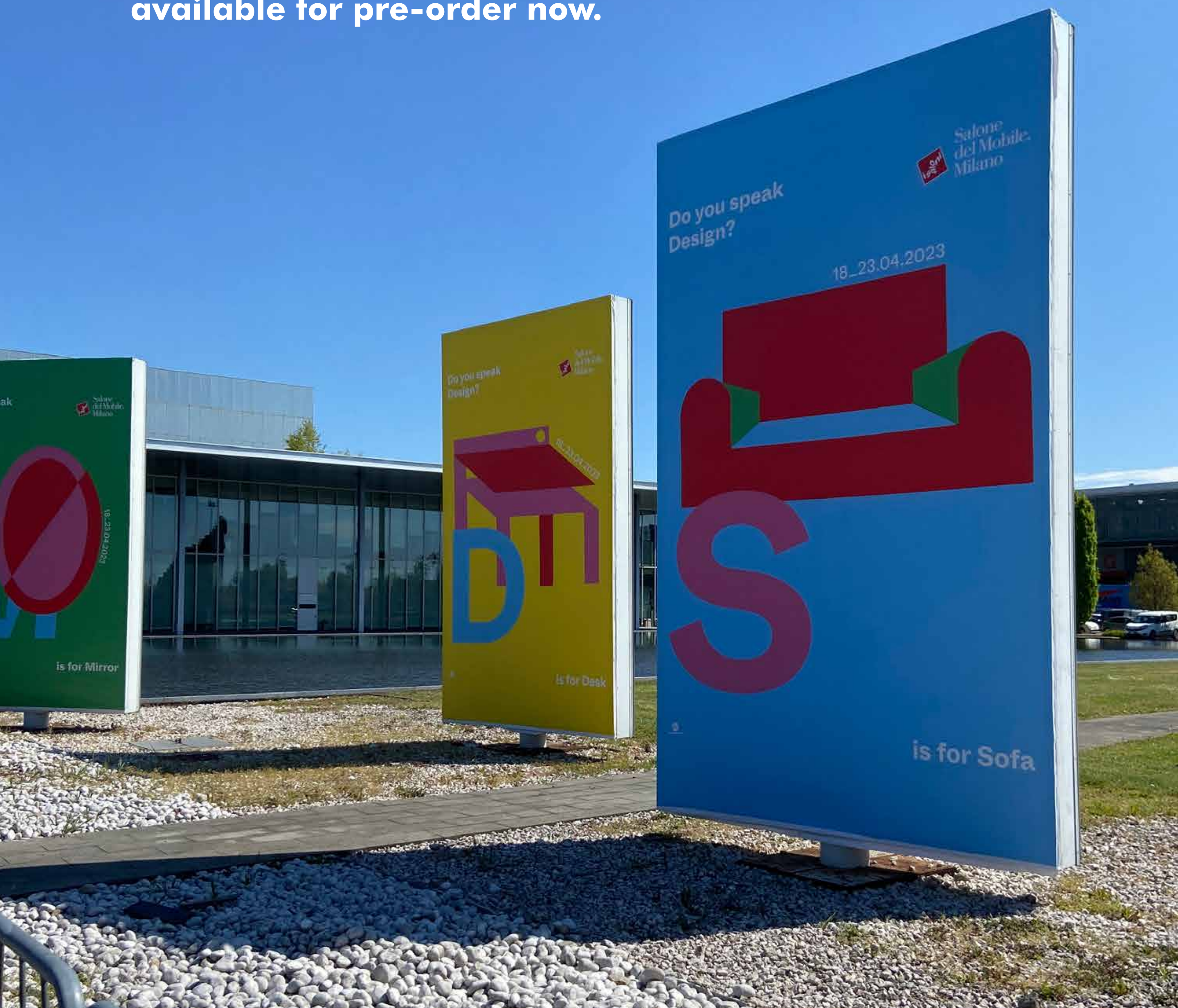
Also featuring

# Milan Collection

Latest Launch

When the world's best furniture brands showcase their latest concepts for Home at the world's largest design event, the architecture and design community sit up and take notice. For this is where global trends emerge, and new design sensibilities are born. New ideas, products and solutions for Living, Dining, Bedroom, Study, Entertainment, Outdoor and Kitchen.

**Soon in our stores,  
available for pre-order now.**



# Molteni & C

Italy 1934

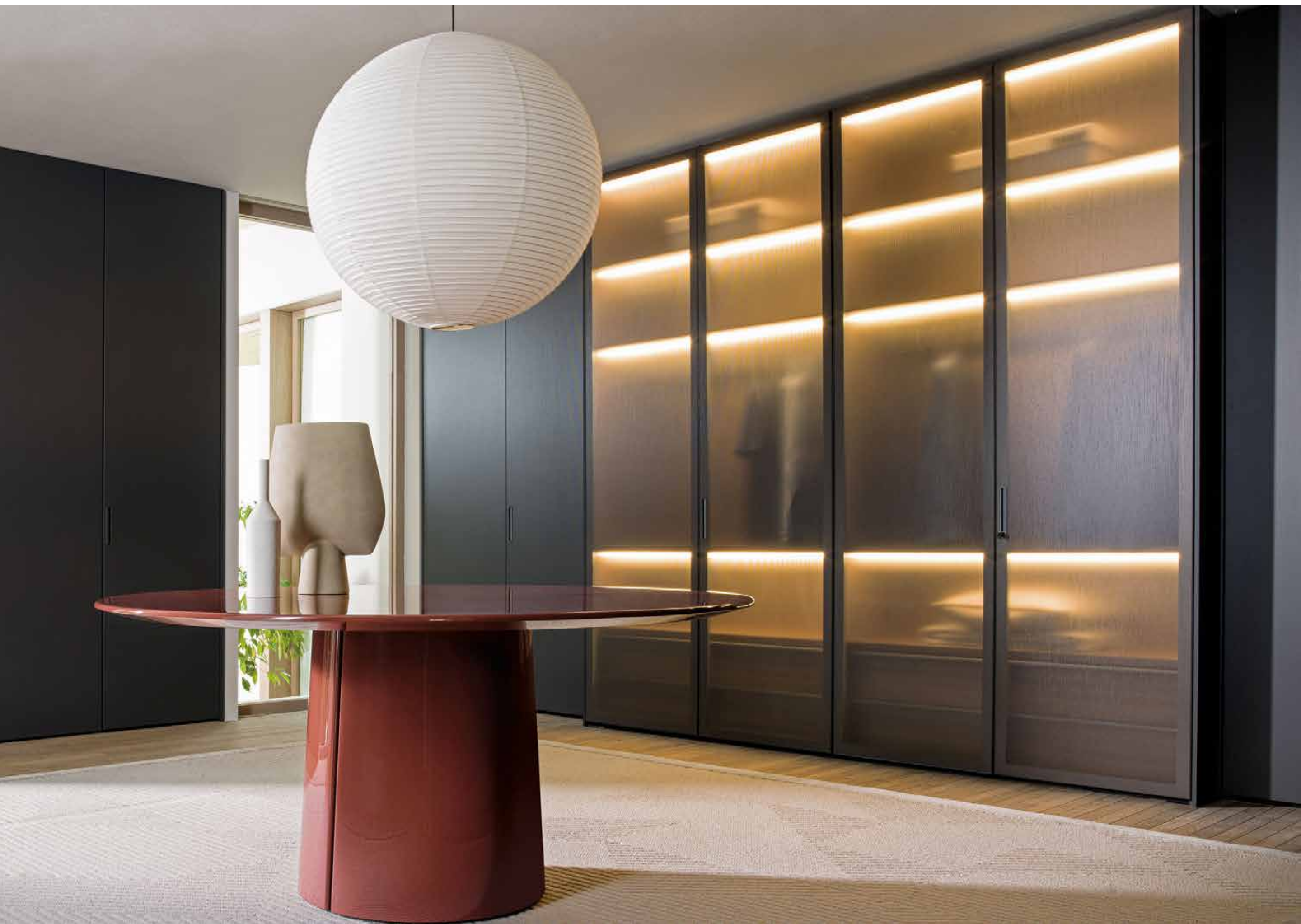
KITCHENS . WARDROBES . BEDS . SOFAS . TABLES  
STUDY . MULTIMEDIA CONSOLES . CABINETS

---

## Home, an ecosystem of warmth and balance

*Carrying forth a rich legacy of exemplary design and cutting-edge craft, the new Molteni&C collection perceives Home as a warm, welcoming and protective nest; reassuring from an ever-changing external context.*

**Linear**, a new addition to the Gliss Master collection, features wardrobe doors with 3D striped effect on wood and smoked glass. Customisable with various finishes and profiles. Designed by Vincent Van Duysen. **Mateo**, a dining table with a slightly flared cylindrical base vertically divided in two, creating a new design element.





Unique wardrobe designs for idiosyncratic taste. The new **Baltimore** double-sided island unit with dual functionality: storage on one side and cushioned bench on other. The two drawers beneath provide extra storage. Designed by Matteo Nunziati. Pictured with Gliss Master Window, Gliss Master Grip and Gliss Master Sistema 7.



**Beauté**, a versatile vanity that can be added to all wardrobe proposals, comes with side drawers, a backlit folding mirror, rear shelves with LED lighting, and convenient USB sockets.



The **Augusto** sofa, with recycled PET polyester fibre seat cushions, sinuous lines, and elegant piping detail. Designed by Vincent Van Duysen. Pictured with **Cinnamon** armchairs that feature a U-shaped base, bulbous seat with removable cushion, and sleek, concealed stitches. Designed by Naoto Fukasawa.



Molteni&C launched the new outdoor collection at Milan Design Week.

The chaise lounge outdoor chair D.150.5 was first designed by Gio Ponti for the cruise ship Andrea Doria in 1952. Resurrected by Molteni in a new collaboration, made of solid teak wood.



The **Landmark Collection** by Vincent Van Duysen reinterprets Luca Meda's original design with woven elements. The **Palinfrasca** sofa, made of solid teak, features a curved, soft, angular design for heightened comfort, reminiscent of Mediterranean weaving traditions.









The **Ratio** kitchen, presented with new features, most notably an integrated seating system. Metal grids define the basic architecture. Different thicknesses and volumes create an elegant interplay of balances with minimal techno/structural elements. New floor bases, equipped with slatted doors, internal lighting, and handles with matching profiles create a decorative frame that gives rhythm to its structure. The materials embody Mediterranean characteristics.

# PIANCA

Italy 16th century

WARDROBES . WALK-IN CLOSETS . CONSOLES . ACCENTS

---

## Contemporary statements rooted in artisanal craftsmanship

*Woodwork masters for 14 generations. Makers of authentically sustainable furniture systems that are a homage to nature and the beauty of simplicity.*

The bedroom ensemble from Pianca spells Italian craftsmanship and beauty. The **Amante** bed exudes vintage charm with a hand-pleated headboard and lacquered grissinato wood sides, which welcome the soft padded structure around the base. The walk-in closet is free-standing, with lines that emphasises the lightness of the architecture.





The **Teatro** walk-in closet underlines transparency, visual lightness, and linearity. Transparent or reeded glass back panels, side panels, and doors allow for customisable design to suit any style and functionality.

The **Murano** wardrobe honours the timeless appeal of the Murano glass. The door comes in transparent or reeded glass, suitable for other walk-in wardrobes too.





**Sipario** is made up of doorless wardrobe modules that can be assembled to suit individual preferences. With a vast array of finishes, and rich features for comfortable organisation and separation.

Part of the **Dedalo Collection**, this cylindrical-shaped corner sideboard comes with two drawers and a practical recessed top. Seen here in glossy lacquered mauve with brass legs, customisable with Pianca's wide range of colours and materials.





Botany meets ergonomics in **Calatea**, a bold, enveloping armchair in natural colours, designed by Cristina Celestino. The chair is an exploration of forms that investigates the out-of-scale proportions of simple, primitive elements like leaves.

The defining feature of the **Embrace** upholstered bed is the curved headboard that echoes the warmth of an embrace. Also comes with storage. Seen here along with **Palù** bedside table and bench, which have a slender cylindrical shape with vertical wooden rods reminiscent of bamboo canes.



# reflex

Italy 1940

DINING . BAR CABINETS . BEDROOMS . LIVING  
LIGHTING . MIRRORS . CLOCKS

---

## When materials work magic, moods manifest

*Reflex combines Venetian craftsmanship and design with cutting-edge technological processes. As pioneers in the use of materials, the inventiveness continues in a collection that draws strong stylistic inspiration from the world of architecture.*

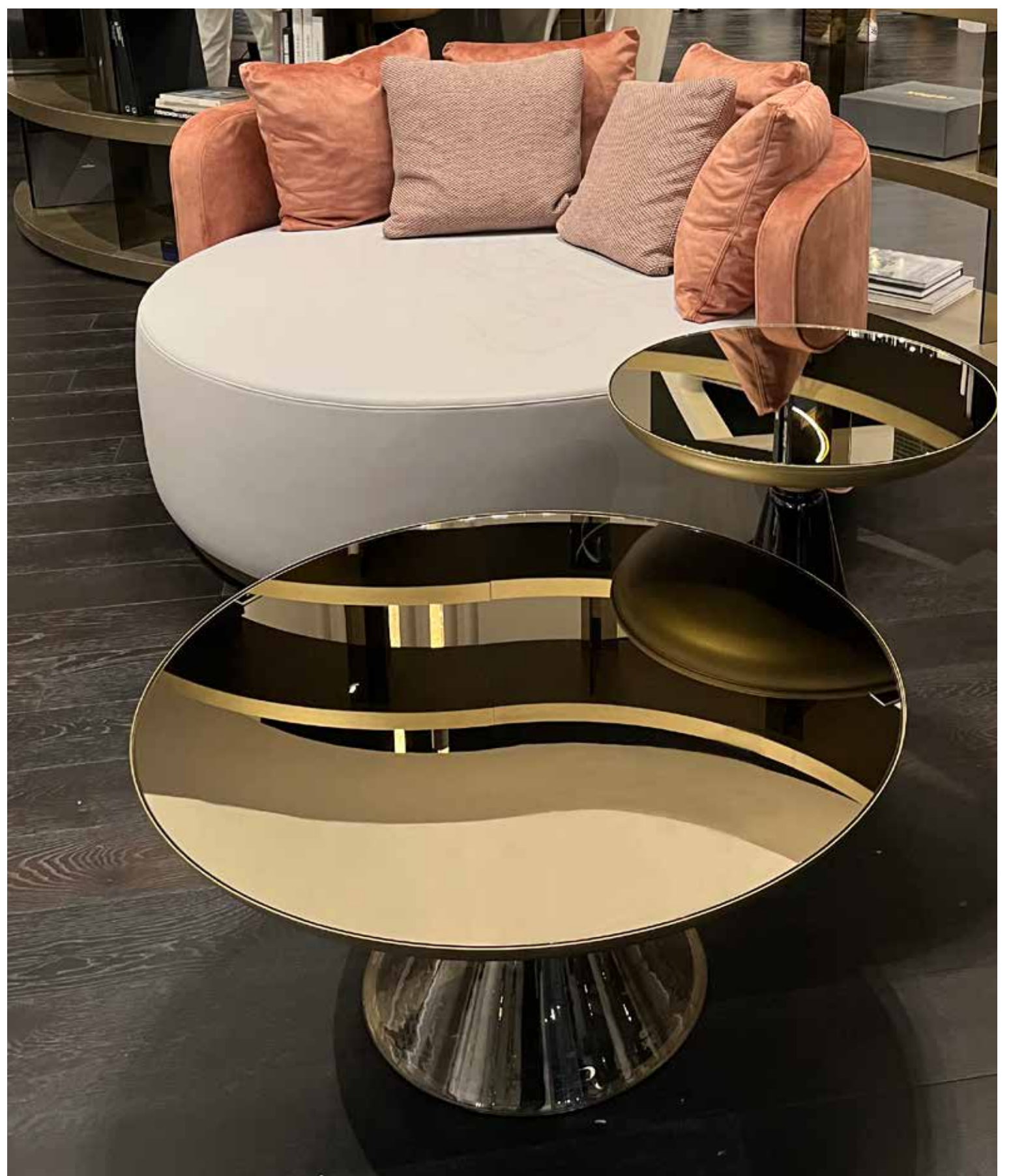
**Dune 72** glass dining table with base in extra clear glass layers. Available with rectangular and square-round tops. Seen here with **Atlantic** chairs, back and seat upholstered in leather/ fabric.

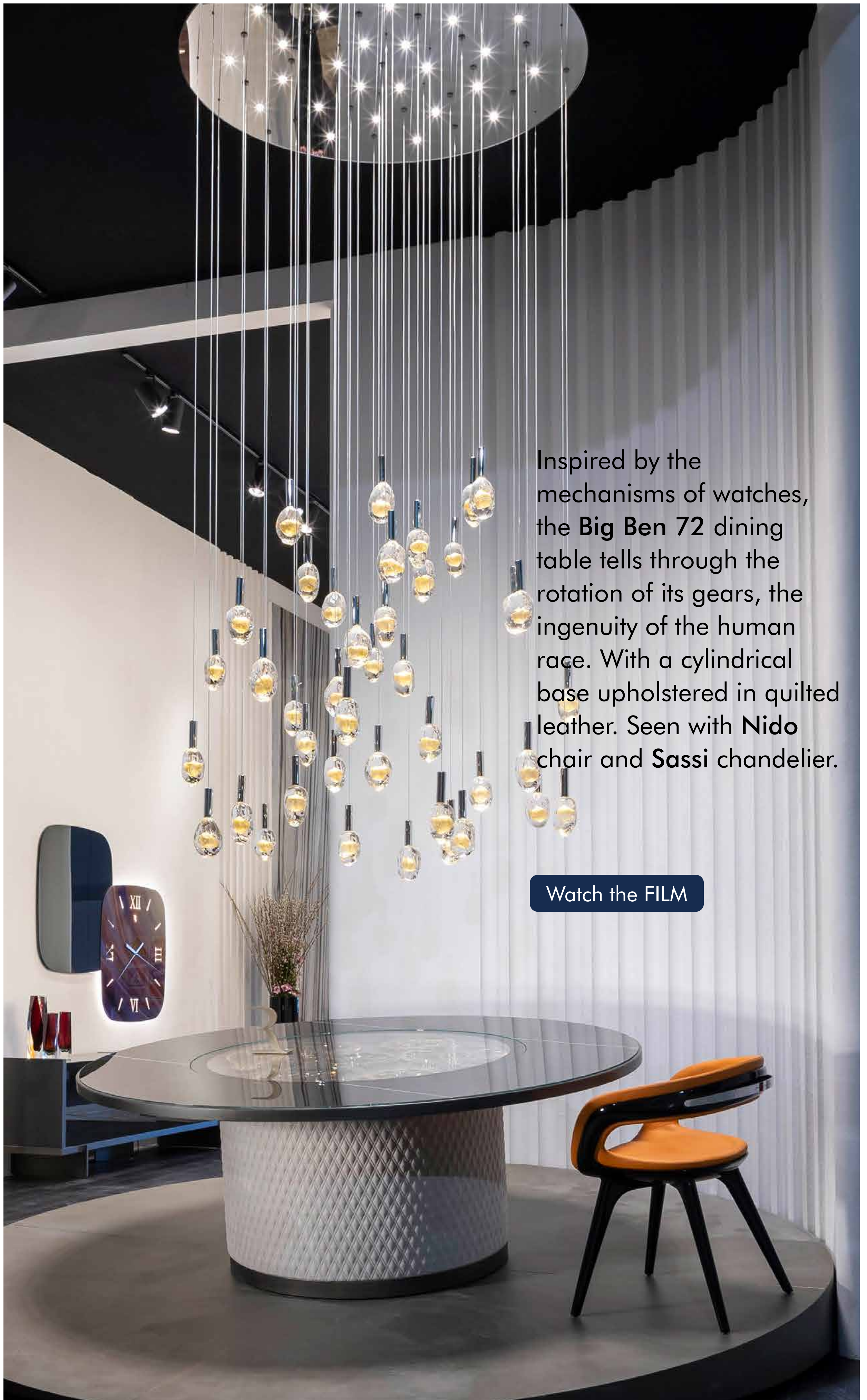




The visually striking **Casanova 72** dining table features Venetian-inspired design, with legs in transparent Murano glass or pure gold finish on a single long smoked mirror glass plinth, and a 15mm thick extra clear glass top with optional Bohème engravings. Shown with **Ludwig** chairs and **Comete** ceiling lights.

The **Hug** armchair, upholstered in leather or fabric, base in bronze finish. With **Accademia 40** side tables, base in transparent Murano glass, supported by satin brass finish. Top in bronze mirror or in extra clear etched glass (internal LED light version).





Inspired by the mechanisms of watches, the **Big Ben 72** dining table tells through the rotation of its gears, the ingenuity of the human race. With a cylindrical base upholstered in quilted leather. Seen with **Nido** chair and **Sassi** chandelier.

[Watch the FILM](#)





The **Space XL** bed with quilted headboard, lateral wings in MarmoReflex® with back-light.



Soft lines, airy aesthetics, and a contrast of materials are what make the **Nido** chair adaptable to different spaces and people. Designed by Pininfarina.



The new **Billiard** snooker table with an LED lighting system set into the inner edges. Lacquered wooden structure in Bronze, satin brass, satin dark brass and satin Titanium options. Legs upholstered in quilted leather. Seen with the **Space** suspension lamp in Agata Crystal shade. Frame and canopy in Bronze finish.



The **Tango T Box** entertainment unit with a bookcase is modular and curved, featuring wooden shelves in satin brass and doors in marble glass. Customisable with Reflex's range of finishes and materials.



**Aurora** is a modern wine wall designed to create atmosphere and inspire wonder. With a frame in black Lacquered metal, panel in MarmoReflex® marble glass or LegnoReflex® wood glass, and backlit glass shelves with a prismatic shape.

# KOINOR

Germany 1950

MOTION SOFAS . COUCHES . RECLINERS . CHAIRS  
DINNER SOFAS

---

## The freedom to move however you please

*An icon of unparalleled German innovation and craftsmanship, Koinor is a specialist in motion seats in fine leather. See smart sofas with special mechanisms and a multitude of seating and layout options.*

Koinor celebrates 70 years of German craftsmanship, innovation and perfection. **Caio's** diverse and hidden functions spell maximum comfort, through adjustable armrest, backrest, seat depth and optional motorised footrest with manual folding function. Available in a wide choice of upholstery colours and configurations.





The new **Hiero** sofa with two different backrest heights, backrest adjustment, tilt adjustment, and the headrest function for maximum comfort in any position.

The new, tech-enhanced **Free Motion 4.0** sofa. With pivoting armrests/footrests. Manual-version seats rotate 320°, automated-version seats move laterally. Extra features available.



[Watch the FILM](#)



**Alino** dinner sofa. The back dynamically merges with the side sections. The legs come in metal powder-coated textured matt black. And the incredibly soft upholstery elevates the dining comfort and experience.

**Finero**, a futuristic sofa with swivelling seats, armrests that can work as footrests, adjustable backrest for upright seating, and optional motorised footrest with manual folding.



**Saltis** motorised recliner. The adjustable backrest offers high-back comfort and increased seat depth. Thanks to touch sensors, it can respond to the body movement by reclining to the lying position with the armrests moving simultaneously. The base comes in 5 variants.



This swivel armchair with dual upholstery options – seat in leather and back in sculpted fabric – makes for a stunning inclusion in the living and dining space.



**Yoko**, the new motorised recliner with touch sensors on the side. The armrests, which follow the body movement as one reclines, along with adjustable headrests, speak exceptional comfort.



Watch the FILM

# NATUZZI<sup>ITALIA</sup>

Italy 1959

MOTION SOFAS . COUCHES . ARMCHAIRS . RECLINERS  
TABLES . CONSOLES . BAR CABINETS . BEDS

---

## A foray into the ethics and aesthetics of harmony

*Never ceasing to enthrall, the new collection from the Natuzzi family speaks of Harmony - the right balance between body and mind, mankind and nature, and different cultures; of bridges and learnings.*

Designed by Simone Bonanni Studio, the **Melody** sofa, with its linear structure and round shape, conveys ease and comfort. The tone-on-tone piping along the profile of each module emphasises its design.







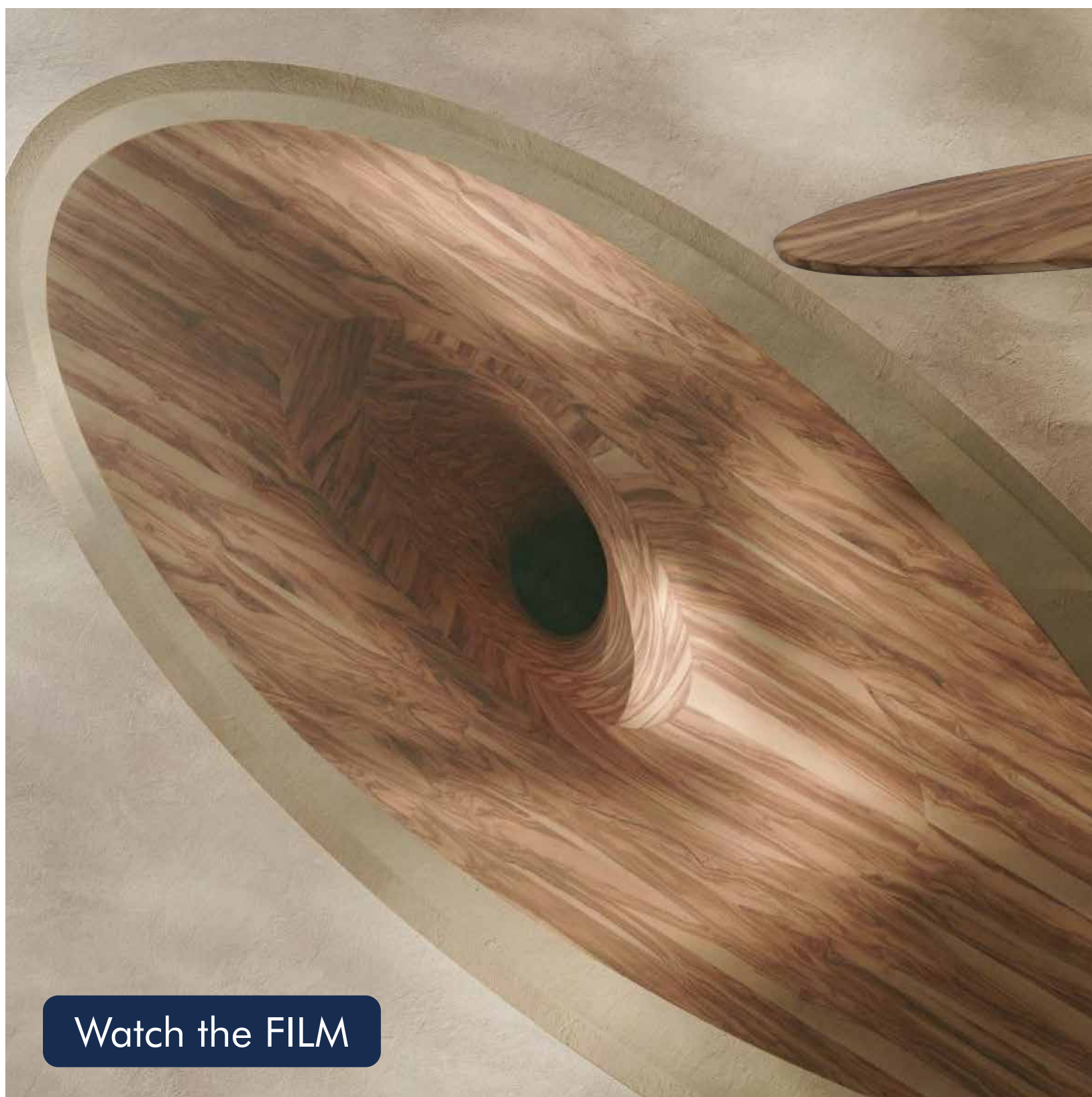
**Splash** sofa by Enrique Martí. Essential lines and simple volumes follow one another to ensure a feeling of continuous envelopment inspired by the movement of water, symbolising the strong bond of man and nature.

**Fiorita** recliner armchair has a simple, enveloping design featuring a metal swivel base. Available in a wide range of fabric and leather colours.





Design and technology come together in the **Wellbe** sofa. Its triple-motion system allows the seat, backrest, footrest and headrest to adjust independently, thereby elevating the feeling of comfort.



The **Uragano** dining table is a sculptural homage to the natural beauty and richness of Puglia, the origin place of Natuzzi. Its oval glass top rests on a majestic olive wood base, resembling a centuries-old tree reaching for the sun and breeze.

[Watch the FILM](#)



The harmony of wood and metal comes together in the **Radice** modular bookcase and entertainment system is designed by Sebastiano Tosi. Easily customisable, it comes in various heights, and any desired width.



**Green Rabbit**, a unique armchair transporting with a multi-sensory experience. Conceived by three friends - Giuliano Sangiorgi, Fabio Novembre, and PJ Natuzzi.

The rechargeable, sensor activated **Germoglio** light by Marcantonio was born from the idea of giving dying olive trees affected by xylella a second life.



 **NICOLETTIHOME**<sup>®</sup>

Italy 1967

MOTION SOFAS . COUCHES . ARMCHAIRS

---

## The beauty of 'Made in Italy' upholstered to perfection

*With a heritage synonymous with Italian style and craftsmanship, NicolettiHome is about pure design innovation. The new collection offers numerous options in leather and fabric upholstery, with many adjustable features.*

**First** sectional sofa with adjustable headrests welcomes you to an oasis of comfort. Also, featuring **Artis** high back chair with an enveloping design and a metal swivel base.





**Folk** stands out with its distinctive metal legs and vibrant turquoise colour. This elegant sofa features seat depth adjustment and reclining backrests.

**Pisco**, with its reclining feature, adjustable headrests, and distinct lines, makes a contemporary, chic statement. Available as a sofa set – two- or three-seater or as a sectional.





The **Groove** sectional sofa offers plush padding for comfort and a smooth transition for extended seat depth. Its movable armrests are perfect for lounging or for use as an elevated arm support.

The **Tres** modular sofa with movable backrests is ideal for mid-spaces, such as between dining and living zones, or to create a flexible solution for a grand living room.



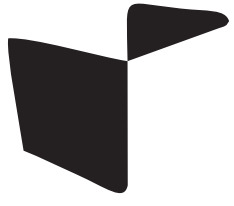
**Reviva®**, the innovative fabric for sofas and chairs, made entirely from recycled plastic bottles through a certified mechanical process. A superior sustainable fabric to choose.



**Marlene** armchair with a pinched button backrest. Available in a wide range of colours.

The new **Octavia** armchair has an elegant and enveloping design, harmoniously combining comfort and style. With swivel or fixed base option.





**CALIA**  
ITALIA

Italy 1965

SOFAS . ARMCHAIRS

---

## A heritage of innovation, comfort and versatility

*Transforming the world with exemplary design, cutting-edge craft, and innovation. Molteni&C brings in newer perspectives by collaborating with legendary architects and designers.*

**Aplomb** invites one to converse, entertain, sleep and dream of better worlds. This angled sofa can be placed in corners or open spaces. Allowing innumerable configurations for personalised spaces.







The **Oscar** chaise lounge sofa with reclining feature on one side offers leg support and also embraces the back. With a metal base and upholstery in fabric or leather.



**Milla**, a stylish and compact chair with a circular seat and a round, enveloping back. Available in three versions: fixed with a slender foot that rises up at the back, swivelling closed / open bases.

Inspired by chocolate, **Boero** has a dual mechanism that regulates the adjustable backrest and headrest – allowing for customised ergonomics. Can also be used as a daybed. Available in corner and chaise longue versions.





**Condor Relax** features liftable headrests for added comfort. The clean and essential design contrasts with the soft armrest folded outwards in quilted style. Also available in recliner versions.

The **Vivì** high back chair offers intimate refuge for relaxing moments. Available in swivel or fixed and leather or fabric versions.





**Toby Wing** is an island of unparalleled comfort. Like real wings, its backrests and armrests can be opened to offer seat depth and unique moments of comfort. Available in sectional and chaise lounge versions.

**Cremino** offers endless configurations. Its freestanding backrests can be positioned at one's discretion and also scattered in other rooms of the house. Decorative accent pillows and a unique bucket cushion, also available as a footstool, complete the range.



fama

Spain 1970

MOTION SOFAS . COUCHES . ARMCHAIRS . RECLINERS  
SOFA BEDS . TABLES

---

## The anatomy of comfort configured for all

*The new Fama collection is about smart ergonomics, innovation, and exceptional craftsmanship. A specialist in fabric seating, Fama offers beautiful designs in all sizes – from large sofas to odd sizes of couches and singles.*

**La Ligne 29** upholstery is inspired by the world of tattoo, combining Renaissance paintings and industrial images to create a unique, dreamlike world. The **MyCuore** swivel sofa, seen here, features the artwork 'Hand of Miss' by illustrator/artist André Sanchez.



Watch the FILM



The **Thesis** sofa, designed by Félix Lopez Gil, is a simple line modular program that surprises with its extraordinary comfort, along with side and centre tables for functionality.



**Draco** armchairs with a cosy, embracing backrest. Available in a range of fabric prints.

**Zeus** looks like a normal sofa but transforms into a bed in no time. The low-back couch bed for compact spaces and unannounced guests.





MyNest armchair with footstool in a new avatar– with the Frida fabric print from the La Ligne 29 collection.

The Teseo 'O' octagonal armchair has backrests that can be moved forward. Of its two asymmetrical arms, one is upholstered and the other has a side table that serves as an armrest, a backrest, or a table.





[Watch the FILM](#)

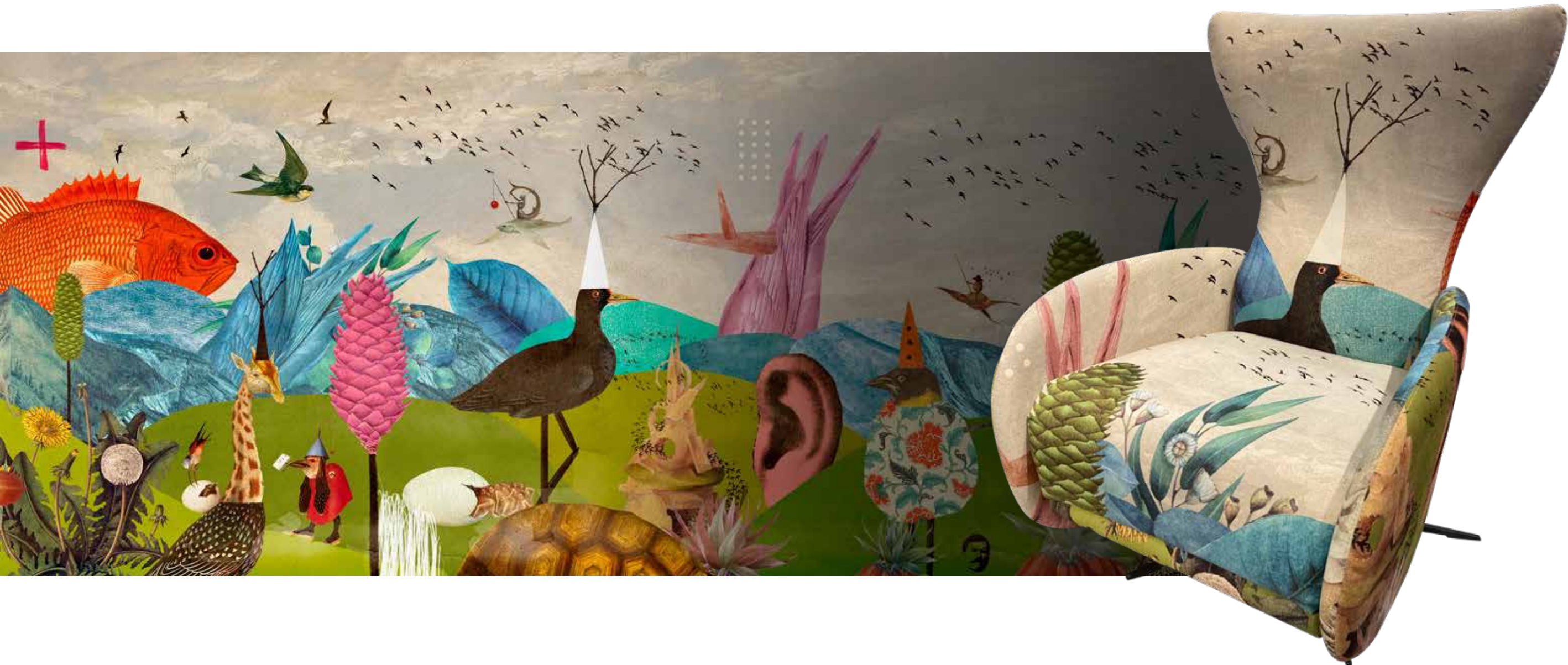
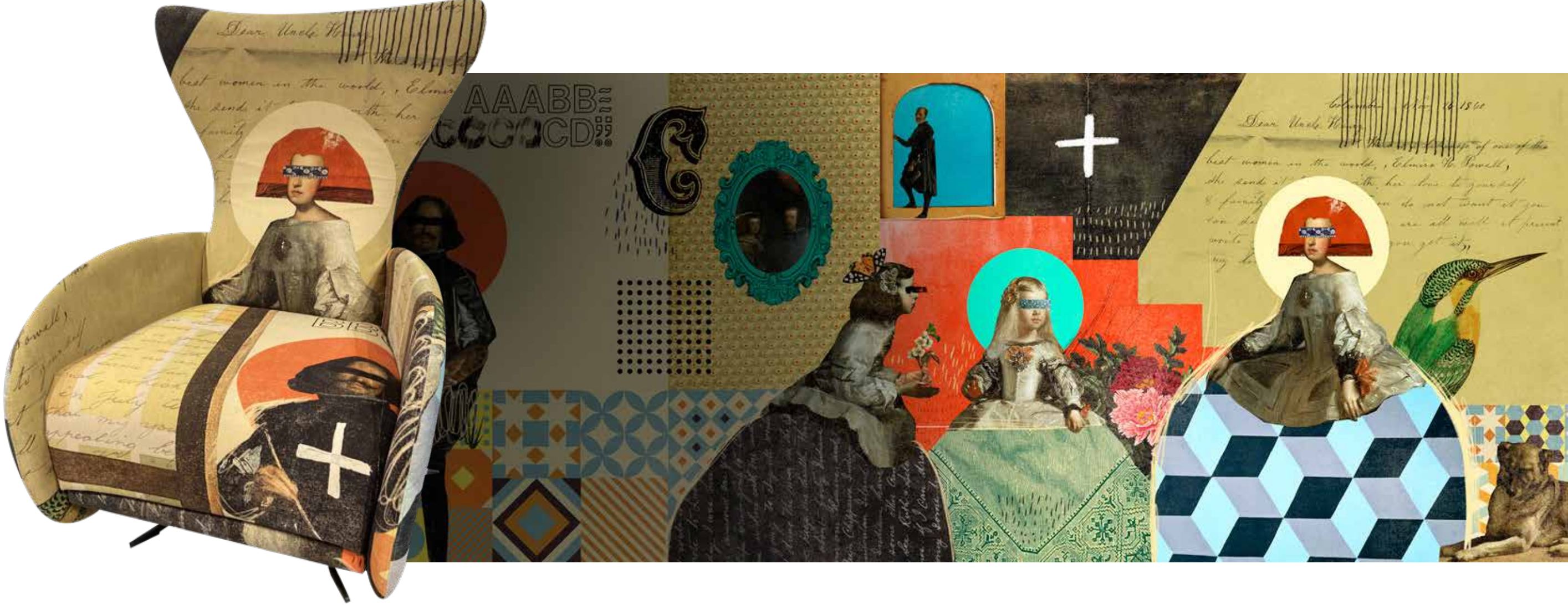
**Solae**, the new outdoor recliner (right) and modular sofa with reclining feature and adjustable side table. Exceptional comfort finally comes to outdoor furniture.

**Fourmi**, sleek, versatile, and multi-functional outdoor chairs. The adjustable backrests feature 30° reclining, the armrests transform into a side table, and the seat depth can be adjusted. Perfect for dining and study too.



[Watch the FILM](#)

From art museums to upholstery, the **Arty Edition** is a collection of 12 drawings inspired by some of the great pictorial works of all times and others inspired by different vanguards of art and design. All of them captured by the artist Jose Azorín in collaboration with the Fama design team, used on the fabric of the Mondrian recliner chair.





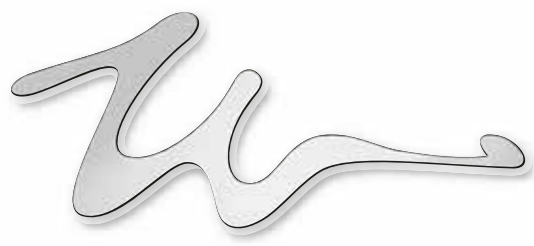


**Boomerang** is a small accessory chair designed by Cristina de la Rosa, defined by its modern aesthetics and the finished structure in vista wood. A design that can fit in perfect harmony with different spaces or can be the protagonist alone.

The **Planet Chairs** collection features 4 types of seats with metal rod bases or metal legs and 10 different backrest designs that offer infinite combinations to mix and match. The backrest comes with a 30° inclination, and there are 2 height options in the stool version.



The multi-functional **Fourmi** high back armchair, with adjustable backrest, headrest, and armrest. Designed by Félix Lopez Gil.



W.SCHILLIG

Germany 1949

MOTION SOFAS . COUCHES . CHAIRS . RECLINERS

---

## Monologues, dialogues and the theatrics of great design

*From neat and straight lines to bold and imposing curves. The new collection from W. Schillig, a German Design Award winner, offers a dramatic range in leather and fabric. Designed functional, sustainable, and loaded with features.*

The **Selinaa** sofa has adjustable headrests, armrests, and seat depth. Its key feature is a hidden footrest that pops out from under the sofa at the touch of a button, allowing one to ease into a reclining position.





The two-seater chaise lounge **MaXxim** sofa is available in varying seat comforts, seat heights, armrests, and leg designs.



The **Placido** recliner with a pinched backrest, swivel feature, and a rotating side table is perfect for the study or to hold a drink.

[Watch the FILM](#)

The two-tone high back **Federico** recliner features fabric on the seat and leather on the back.





[Watch the FILM](#)

The new **Willow** sofa charms with its adjustable headrests, armrests, seat depth, and the hidden leg rest that can be raised at the touch of a button.

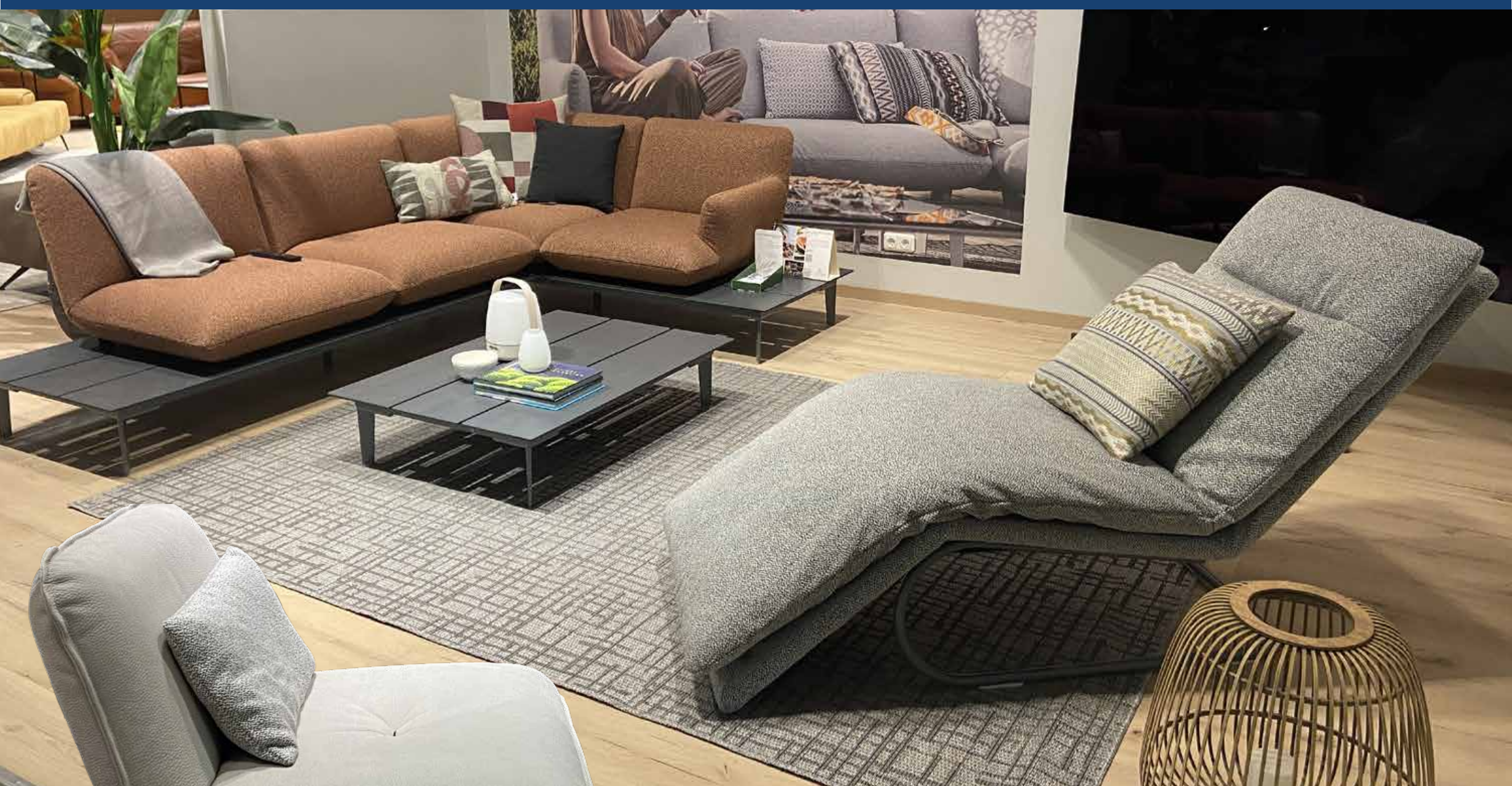
**Caroline** comes designed with sleek legs, wide seats and armrests. What's more, the sofa has adjustable seat depth and headrest that make it all the more special.





The **Maddox** sofa. Spacious armrests and seats with depth adjustment. Add-on cushions for back support and aesthetic appeal. An invitation to sit back and relax.

**Lagoona** is the new outdoor sofa for relaxed evenings, upholstered with Active Line® Plus Outdoor cover fabric that is weatherproof and smooth to the touch.



The **Breeze** chaise lounge recliner, with individually adjustable backrest and footrest, can easily transform into a bed, reclining to 180 degrees. Comes with a USB port for charging.

The **Keno** armless chair.



THE INNOVATORS OF COMFORT™

Norway 1934

RECLINERS. HOME THEATRE SEATING. SOFAS

---

## Beyond recliners; an immersive slide into sophistication

*The innovators of comfort, Stressless boasts a host of patented technologies. The new collection allows for unlimited and unique control. With automatic lumbar support, one-touch synchronised movement and more.*

Inspired by some of London's most chic addresses, the **Mayfair** recliner has gentle curves, padded arms, and a supple seat with a full 360° swivel feature. The patented Glide and Plus Systems ensure maximum support for the entire body.





The **Legend** home theatre seating with the patented **Glide®** and **Plus®** systems. Designed for precise lumbar, back and neck support and to be more responsive to the way the body moves. The luxurious cushioning elevates the whole experience.

**View**, with the revolutionary **Balance Adapt** system built-in, features soft padding and a timeless, modern cushion design with clean lines. This model has an extra tall, slim back, most suitable for those who like to stretch out. The neck cushion adapts to different heights. Comes in various sizes and colours.



# BONALDO

Italy 1936

DINING TABLES . CHAIRS . CENTRE TABLES . CONSOLES  
SHELVING . ACCENTS

---

An emotion-scape of strength,  
stability and familiarity

*An Italian designer brand known for its bold design language and intense craftsmanship, Bonaldo's new statement pieces display an iconic strength of form coupled with dynamic variations of materials, colours and finishes.*

The imposing **Torii** table is inspired by the architecture of Japanese Shinto temples. Its base is formed by two slightly inclined metal elements, and the top is available in wood, ceramic and marble. Designed by Marconato and Zappa.







Conceived by Bartoli Design, **Mellow ST** is a round table with a swivel top – the centre in Black Onyx glossy ceramic and the external top in Brushed Coal Oak. The design has a sculptural appeal, featuring sinuous lines and an interesting interplay of materials.



Designed by Fabrice Berrux, the **Youpi** chair flows seamlessly from its circular backrest to the spacious seat, supported by a flared conical base. The body is upholstered, while the base is in metal.



The **Botón** dining table (Spanish for 'button'), alludes to the eye-catching metal inserts applied to the base, which create a striking contrast. The top is in smoked tempered cast glass and the base in painted metal matt lead.



In the **Mellow** table, the base features two opposing moulded elements in high-density polyurethane that embrace in a sinuous curve. The top is available in two shapes and in wood, glass, ceramic and marble finishes.



Designed by Matteo Nunziati, the **Nelson** bed boasts clean lines and a commanding wooden headboard that frames a plush, padded counterpart and bedside tables. Its slimline wooden bed base rests on slender metal feet.

The **Olos** bed by Mauro Lipparini is inspired by Nordic design. The sober details of the curved wood mark the outer sections of the bed and their design seamlessly flows into the elliptical headboard, creating a naturally enveloping effect.



# calligaris



Italy 1923

DINING TABLES . CHAIRS . CABINETS . CONSOLES  
ACCESSORIES . TV UNITS . OUTDOOR

---

## Fine Italian living, all-encompassing

*Calligaris is the pioneer of furniture design and innovation. The new collection continues to bring forth trendsetting Italian style and craftsmanship for living, dining, sleeping, working, and playing.*

The **Apian** table extends on both sides up to 3 metres in length, offering more seating space. Its striking appearance is defined by the curve and tilt of its metal sheet base, which, along with the top, is available in a range of finishes.





Designed by Gino Carollo, the **Seashell** dining table is a sculptural showpiece. Despite its soft and sleek shape, it is structurally solid, with a cement base and a top made of moulded glass, which is sanded on one side and then subjected to heat again. Available in a range of finishes.

The **Breeze** dining table has a sanded glass top treated with heat, creating an iridescent effect resembling wind-caressed water. The monochromatic surface changes with light, forming two-dimensional shapes. It comes with glass and ceramic tops of various shapes.





**WEEKEND**

MaxMara

×

**connubia**

From bags to furniture, the Weekend Max Mara butterfly takes centre stage in the special collaboration with the design brand Connubia. In the new Tuka collection, the butterfly motif is seen in the fabric-printed upholstery, suggesting a perfect union between fashion and design. The drawings are made by Cecilia Carlstedt, a Swedish illustrator.

calligaris 

100<sup>th</sup>  
Anniversary



A special re-release as a part of Calligaris' 100th anniversary. The Adèl chair is a tribute to the first Calligaris signed chair, the Marocca. It combines tradition and modernity, embodying timeless design. The chair showcases Calligaris' core values: simplicity, study of proportions, meticulous craftsmanship, and the use of wood as their primary material.

**Cluster** is a double-sided, multifunctional modular system designed to be fixed to the ceiling or wall. It can also serve as a room divider. It has a variety of modules: anti-flap containers, display cabinets, shelves, drawer units, desk tops, and accessories such as mirrors and coat racks.



**Tonin**  
CASA

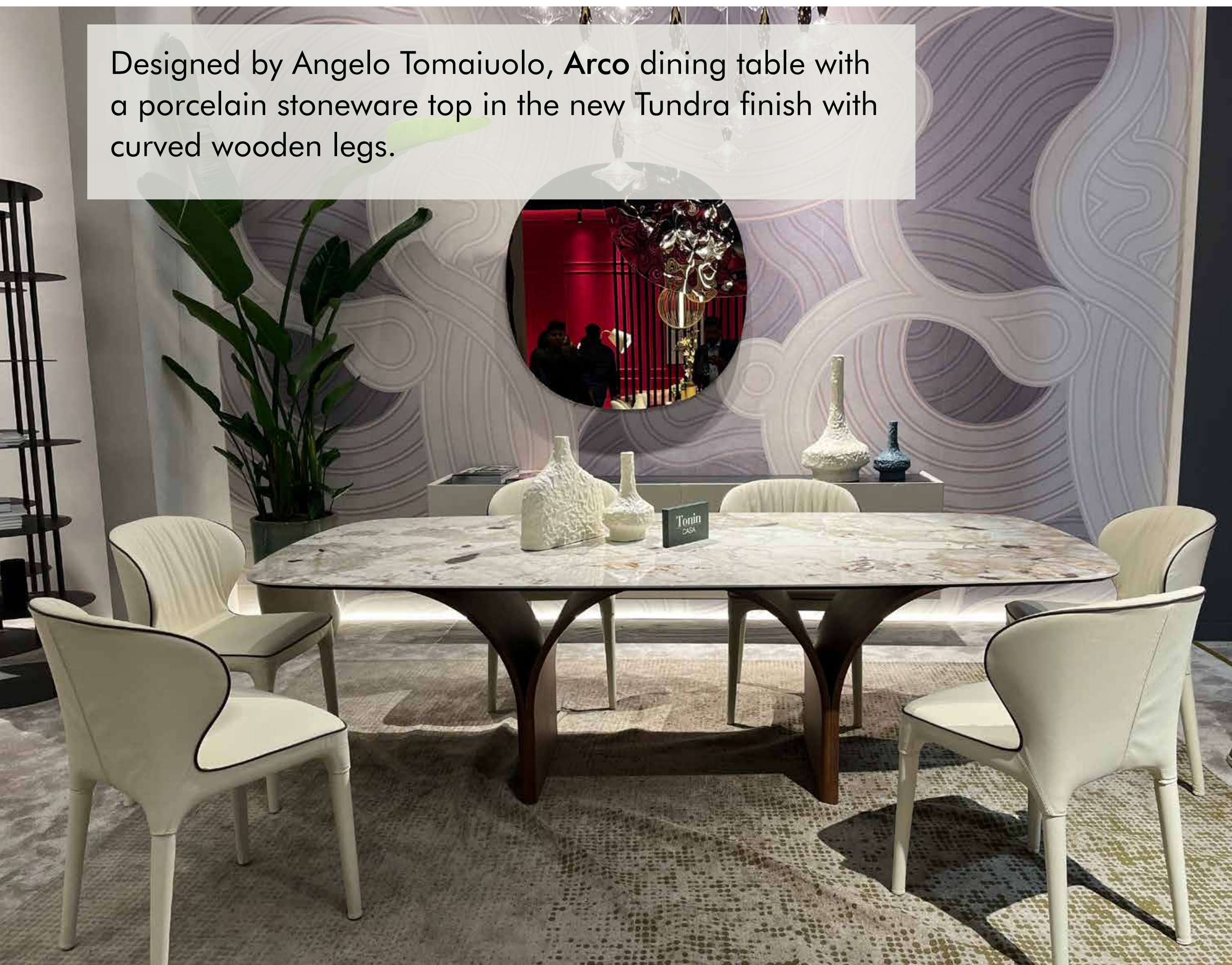
Italy 1967

DINING TABLES . CHAIRS . CENTRE TABLES . CONSOLES  
SHELVING . MIRRORS

## Between fluid geometry and passages of poetry

*Design eloquence and innovation mark Tonin Casa's Italian heritage of blending classic symbolism and contemporary style. The vast new collection offers a diverse range featuring unique designs, materials and features.*

Designed by Angelo Tomaiuolo, **Arco** dining table with a porcelain stoneware top in the new Tundra finish with curved wooden legs.







**Adone Plissé** table combines the sculptural aesthetics of the natural wood with precious handcrafted finishes of the base which is made of bush-hammered and back-silvered curved glass, now in a new plissé version.

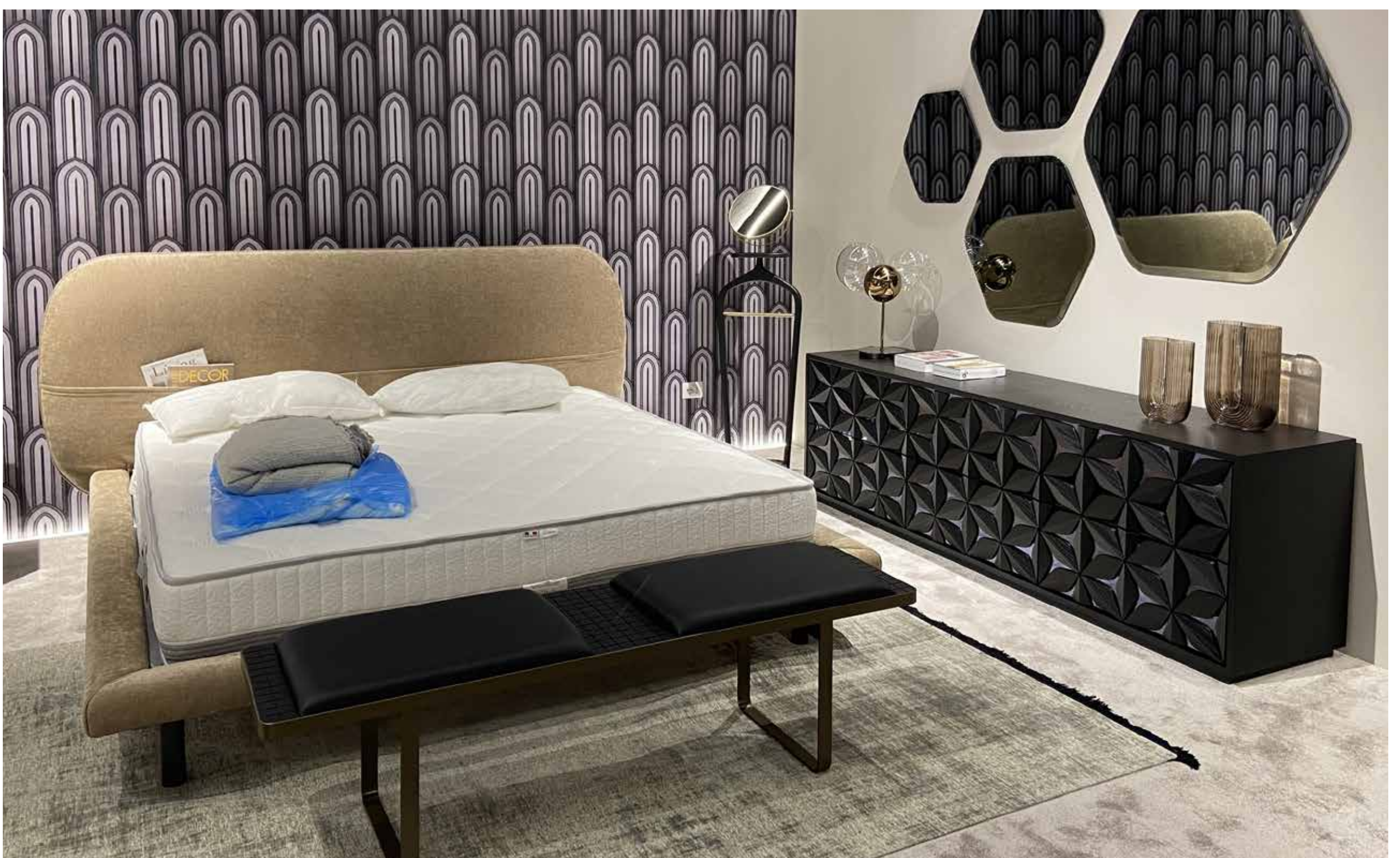


The **Panta Rei** table with screen-printed glass explores the expressive potential of materials. The 12 mm thick glass shows the veining of marble in a new way and creating the organic effect.



The **Ibisco Plus** bed has a softly sculptural headboard with padded vertical bands, supported by metal rods connecting integrated bedside tables. Matt gold metal legs.

**Essential** bed with rounded upholstered headboard and sleeves for magazines and books. Seen here with the **All Star** sideboard, designed by Angelo Tomaiuolo, which features a constellation of hand-applied solid wood petals, creating a unique element of design and high craftsmanship.





Ocean centre tables with interlocking metal base in matt gold finish and smoked-coloured fused glass top.

Oasi is a free-standing bookshelf with curved shelves and modular design available in charcoal, matt gold or bronze finish. On the right is the **Moma** mirror with a curved glass frame in bronze and smoked finish, above the **Monolite** handleless sideboard with four lacquered doors.





Italy 1951

DINING TABLES . CHAIRS . CABINETS . BEDS  
DRESSERS . SHELVING

---

## Design affluence and a distinct vocabulary in wood

*Alf Italia has a rich heritage in crafting elegant wooden furniture. The new collection features tables and cabinetry in playful contrasts of textures and colours set in beautiful solid wood; with a distinctive, high-quality high-gloss finish.*

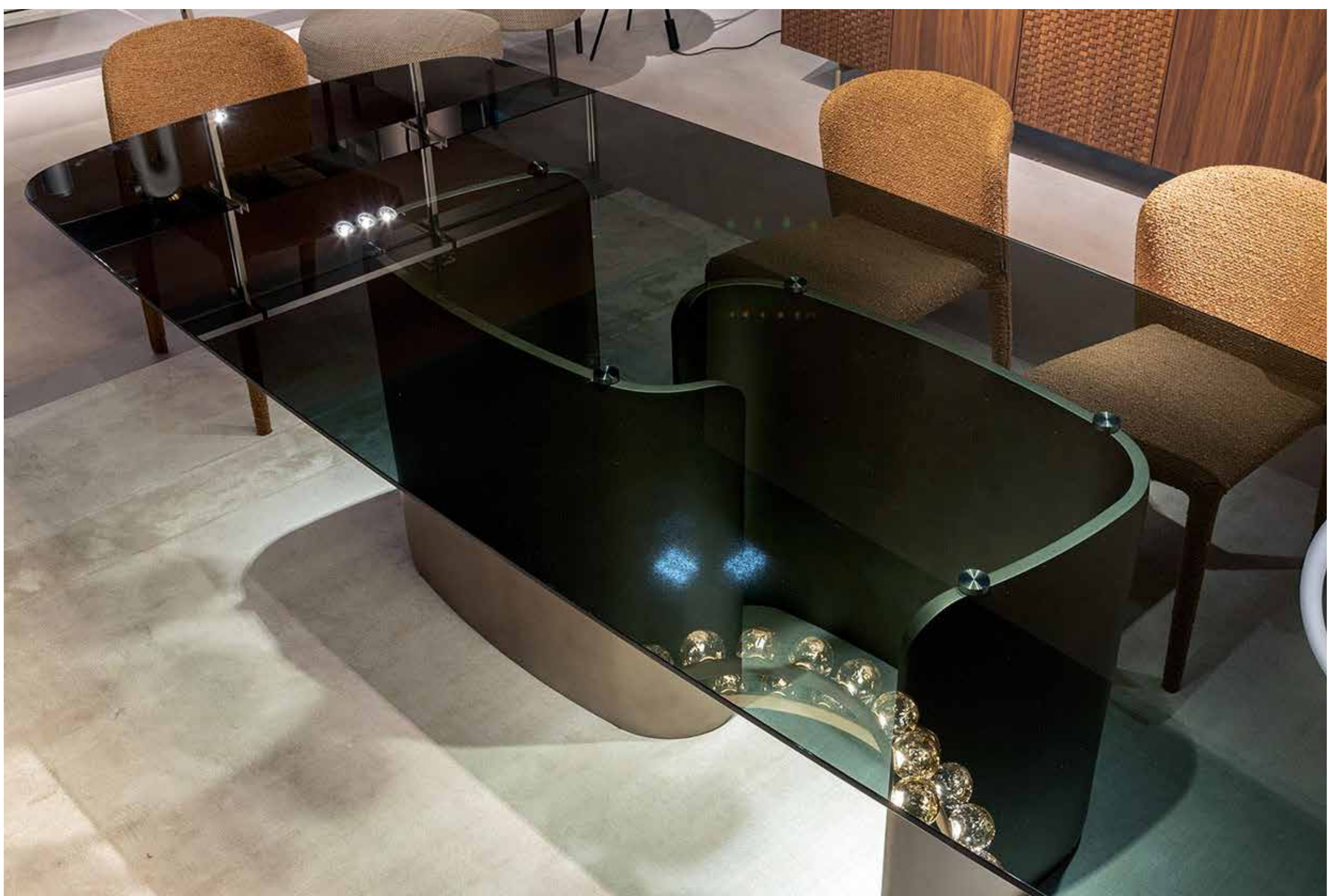
The two-tone **Pearl Eco Veneer** and natural wood finish define the new extensible dining table from the **Jupiter** collection. The legs are in matt bronze.





The **Corso Como** extensible dining table in walnut fluted and brushing beige high gloss finish with chairs in eco-leather.

The **Esse** table stands out with its distinct base composed of two symmetrical curved elements made of high-density polyurethane, supporting a glass or fashion wood top, available in two sizes. The metal base comes in nickel or brushed piombo finish.





From the **Hera** collection, this entertainment unit has an open and closed drawer system with storage.

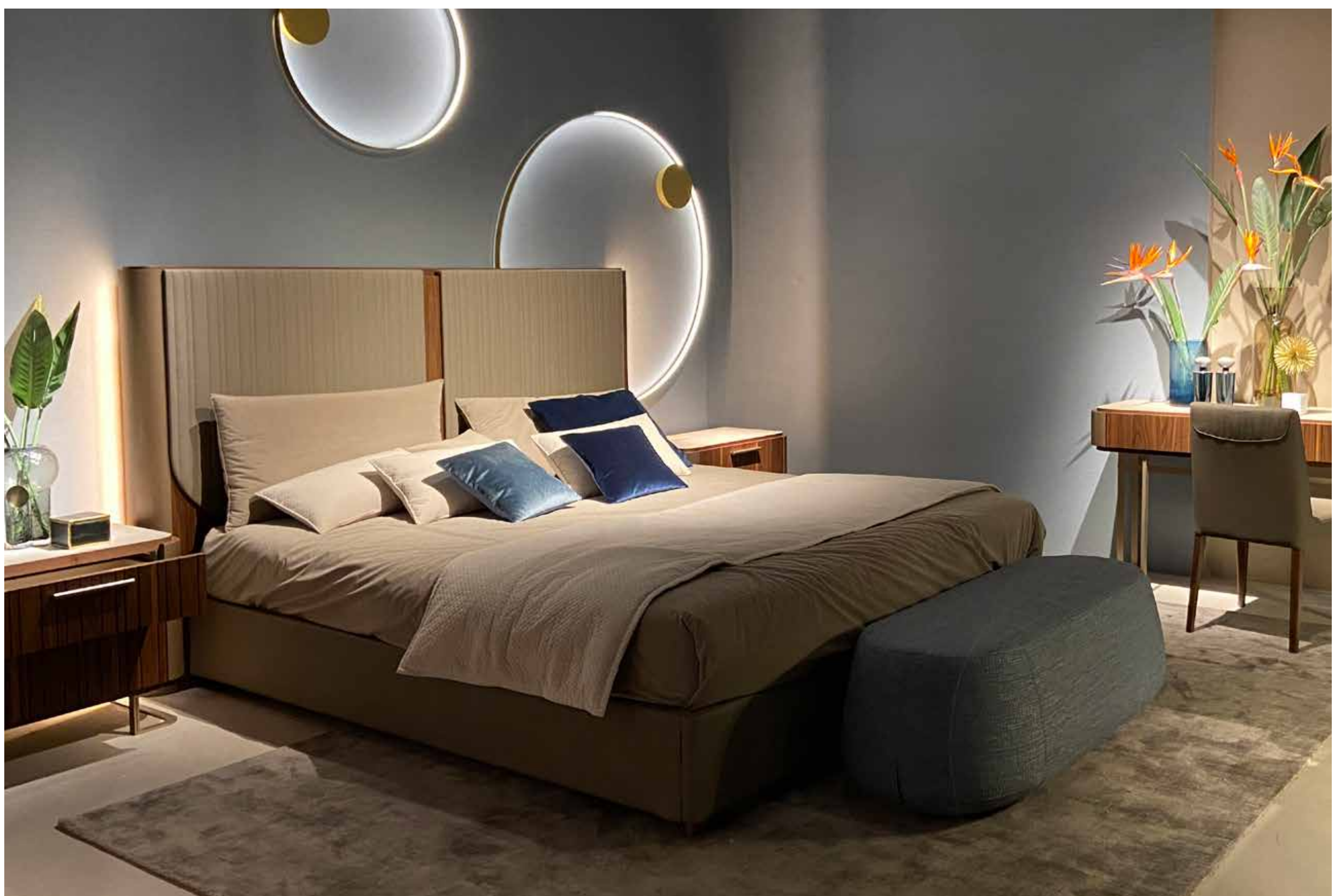


From the **Corso Como** collection, this versatile piece works as a home office table or a stylish dressing table. The choice is yours.



The new bed from the **Corso Como** collection with brushing beige high gloss finish on the body and walnut fluted finish on the headboard with upholstered details.

This bed from the **Hera** collection features a distinctive headboard with exposed wood and upholstered detailing on two sides that add to its enduring charm.



# ezpeleta<sup>e</sup>

Portugal 1935

DECK CHAIRS . TABLES . LOUNGERS . UMBRELLAS  
PERGOLAS . PROJECT FURNITURE

---

## Shaping beautiful outdoors and brighter outlooks

*Ezpeleta is a specialist in outdoor comfort, with material development and design centred around contemporary global living. The new collection offers unique, functional, environmentally-friendly designs for the garden, the poolside and beyond.*

Organic and ergonomic shapes find contemporary expression in **Trena**, a collection inspired by braided chairs. Includes a chair, armchair, and a high stool. Designed by Yonoh Studio.

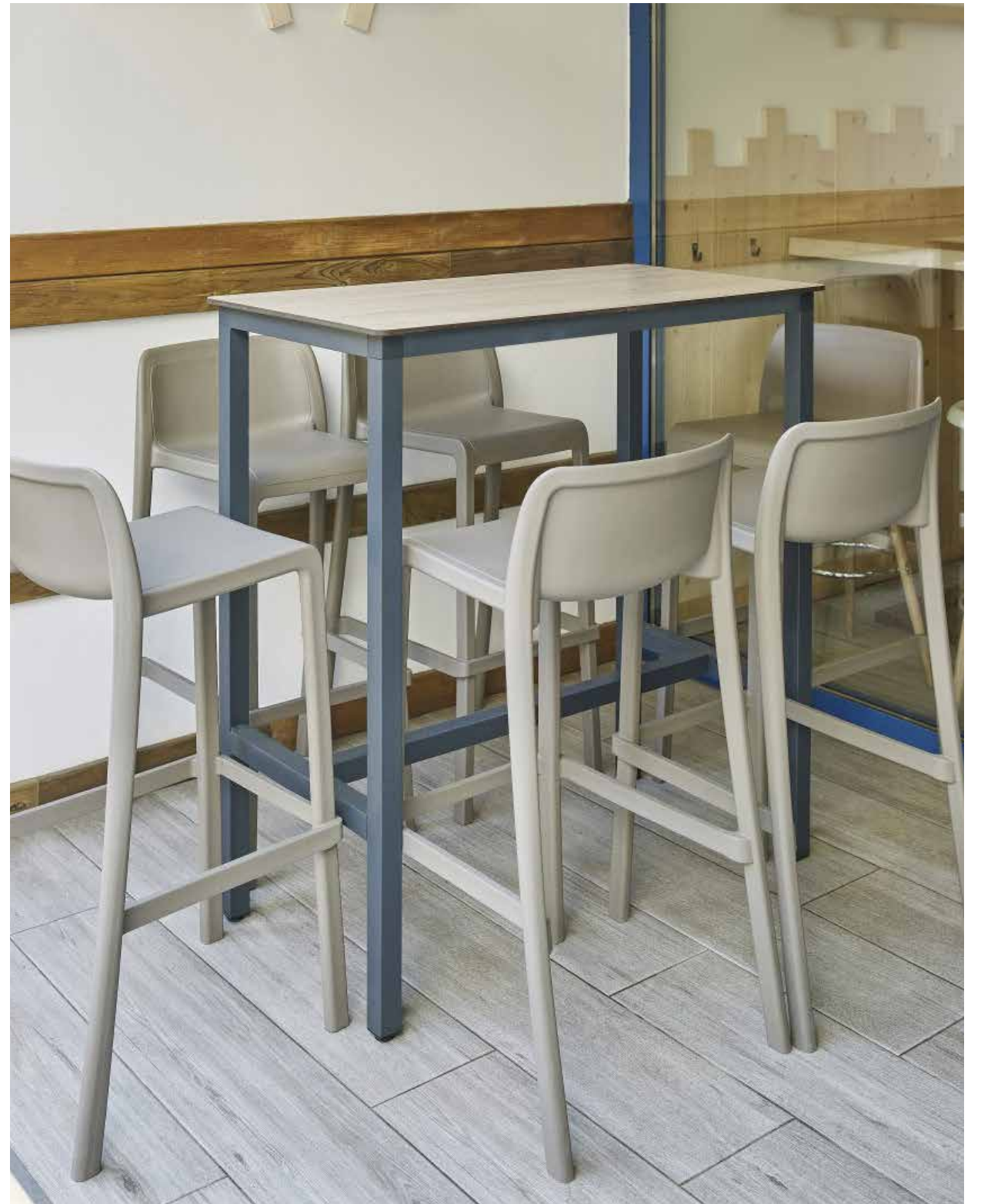




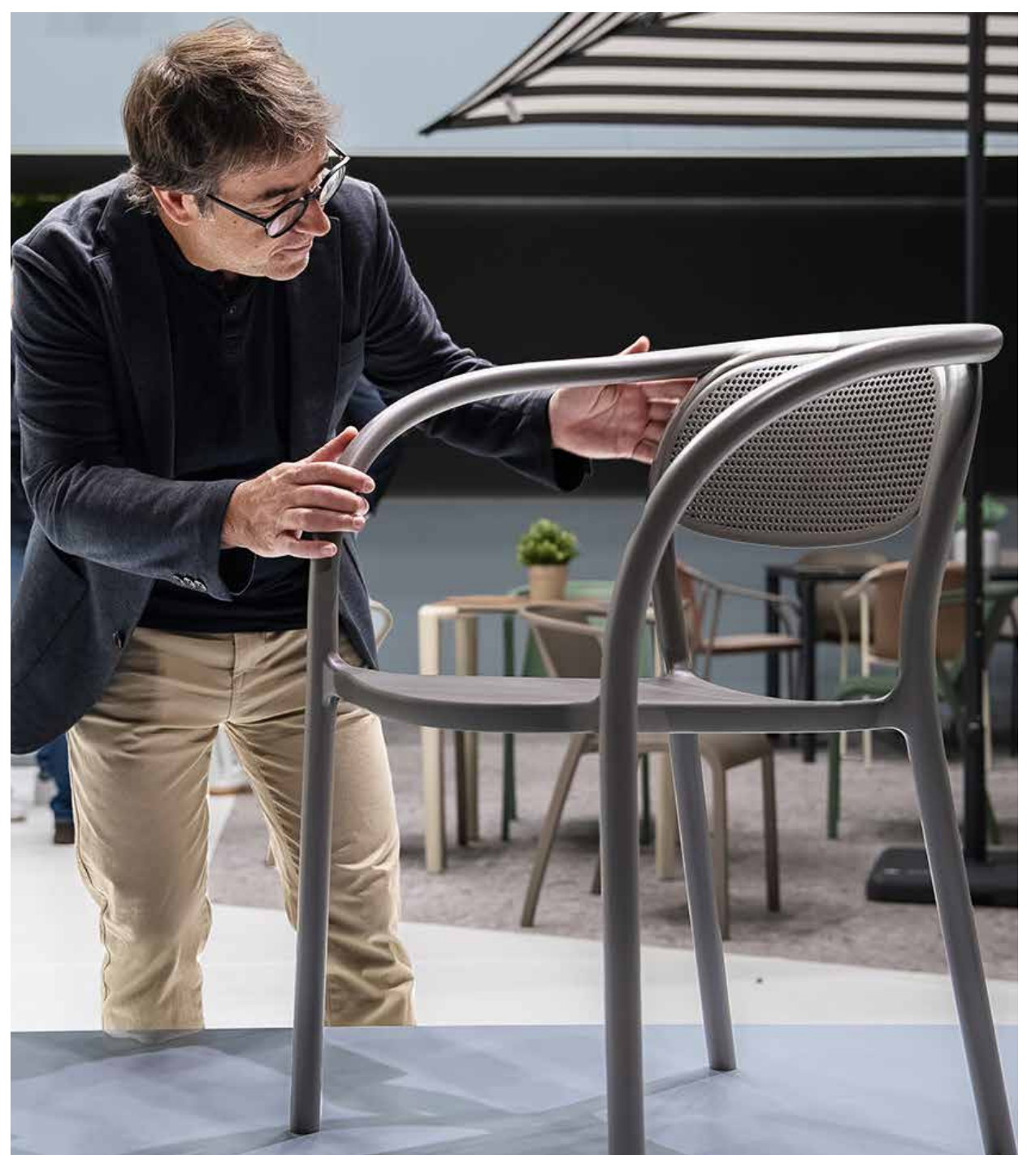


The new **Bake Wood** stackable chairs feature colourful seats, wooden backrests veneered in beech (inside) and oak (outside). FSC certified, made with ULEF glue.

**Urban**, a high table with adjustable feet height. Frame in lacquered aluminium with polyamide elbow joining mechanism. Available in three sizes.



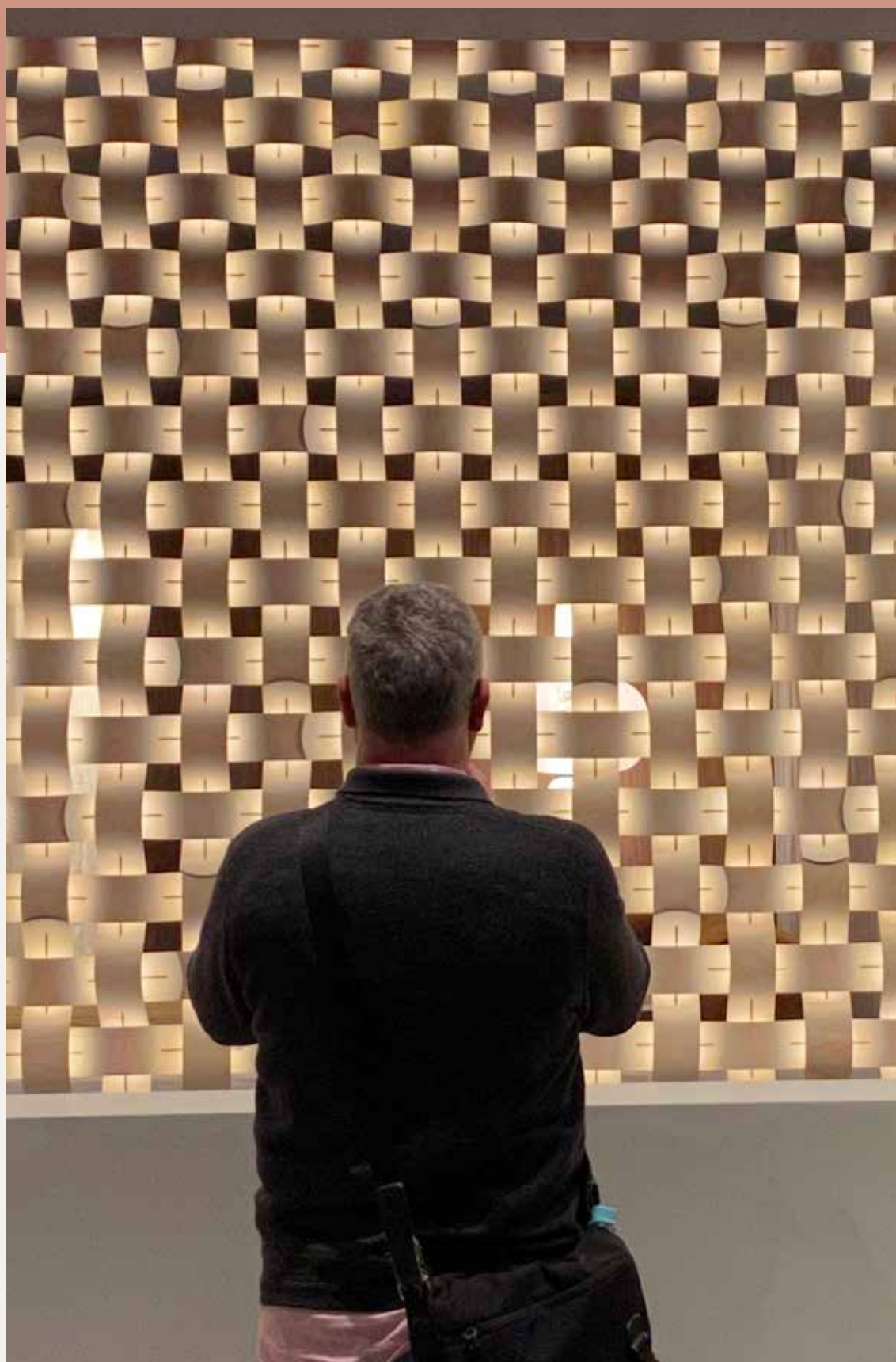
The **Java** parasol. FSC and UV Standard 801 certified, shields skin from UV rays. 100% recyclable OLEFIN fabric, water repellent and stain resistant.



The **Noon** chair, made in collaboration with Héctor Serrano Studio, is a reinterpretation of bentwood chairs.

Some Interior Design trends from

# MILAN DESIGN WEEK 2023



## Weaves

As both a visual pattern and a true woven texture, in various forms. An allegory to hand craftsmanship.



## Nature motifs

Maintaining a connection to our very core, and a trigger for our global situation.



## Trend colours

The deep Oceanic Blue, Summer Orange, Rust - and muted tones around them. In all materials.



## Reduction in materials

Like this office seating unit, with a slim frame and power sockets built into the seat base.



## Smoked glass tabletops

Dark-tinted, bubbled glass, developed with a two step process, saanded and rehated, making one side rough and refractive, and the other smooth.



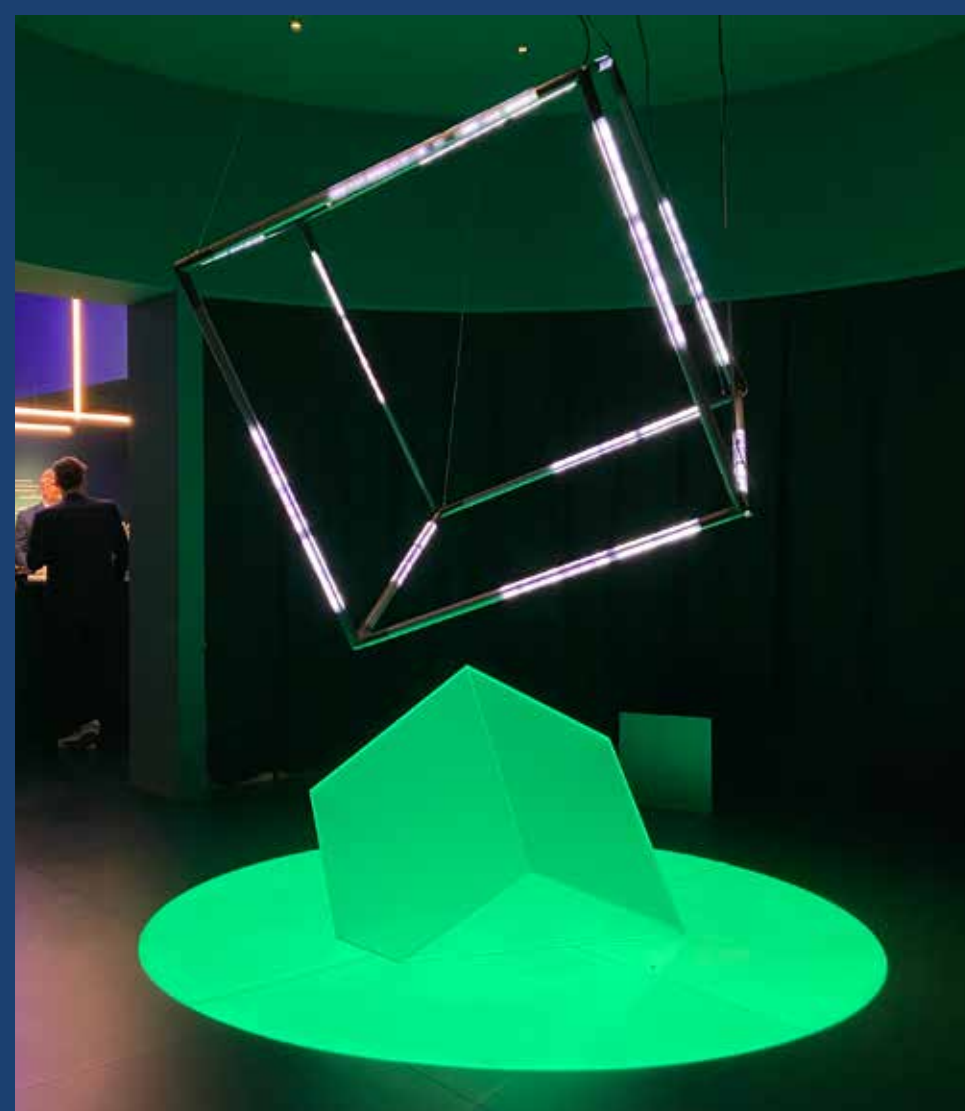
## Revived heritage

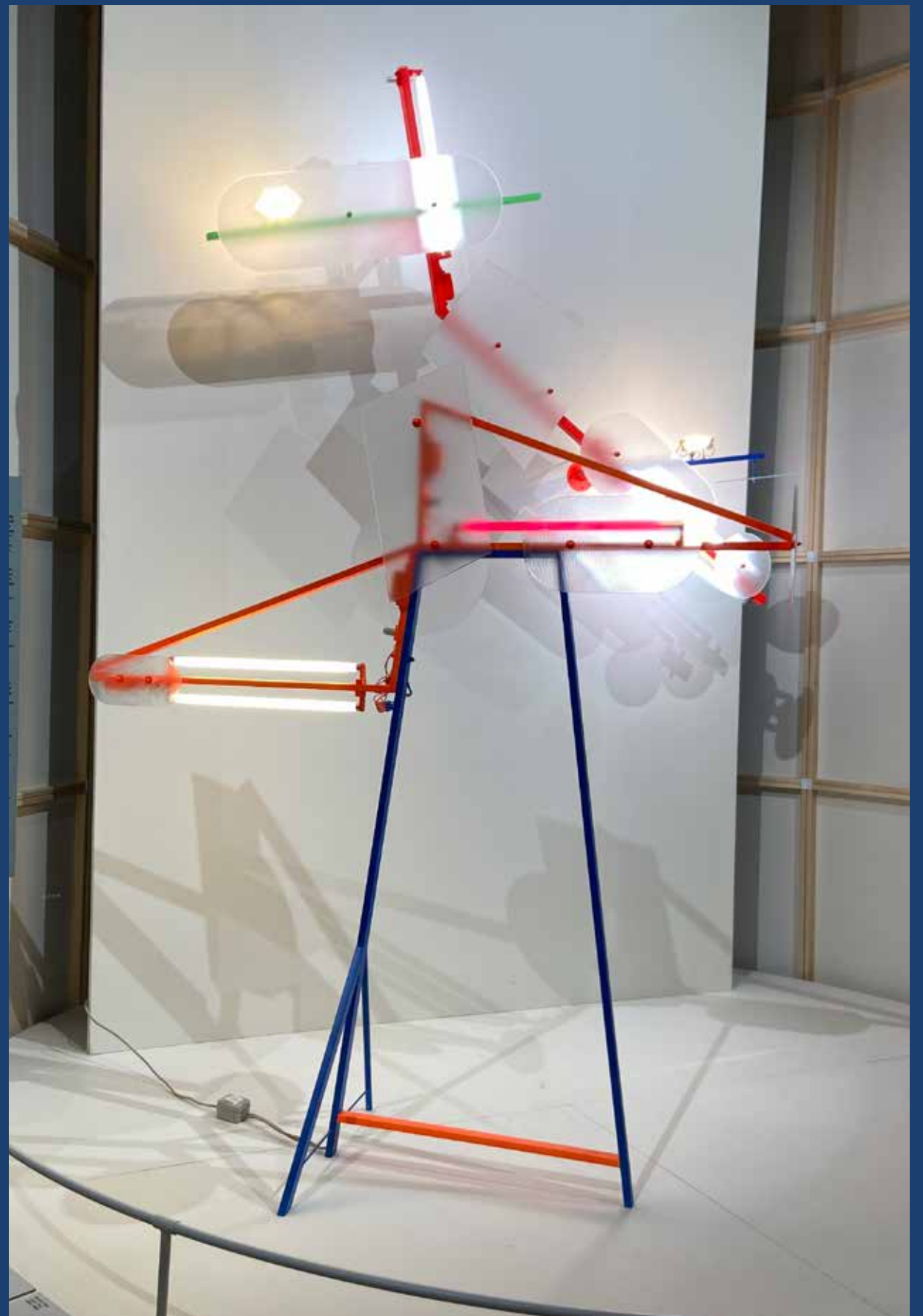
Classical elements restored in contemporary forms, an iconic clash of periods.

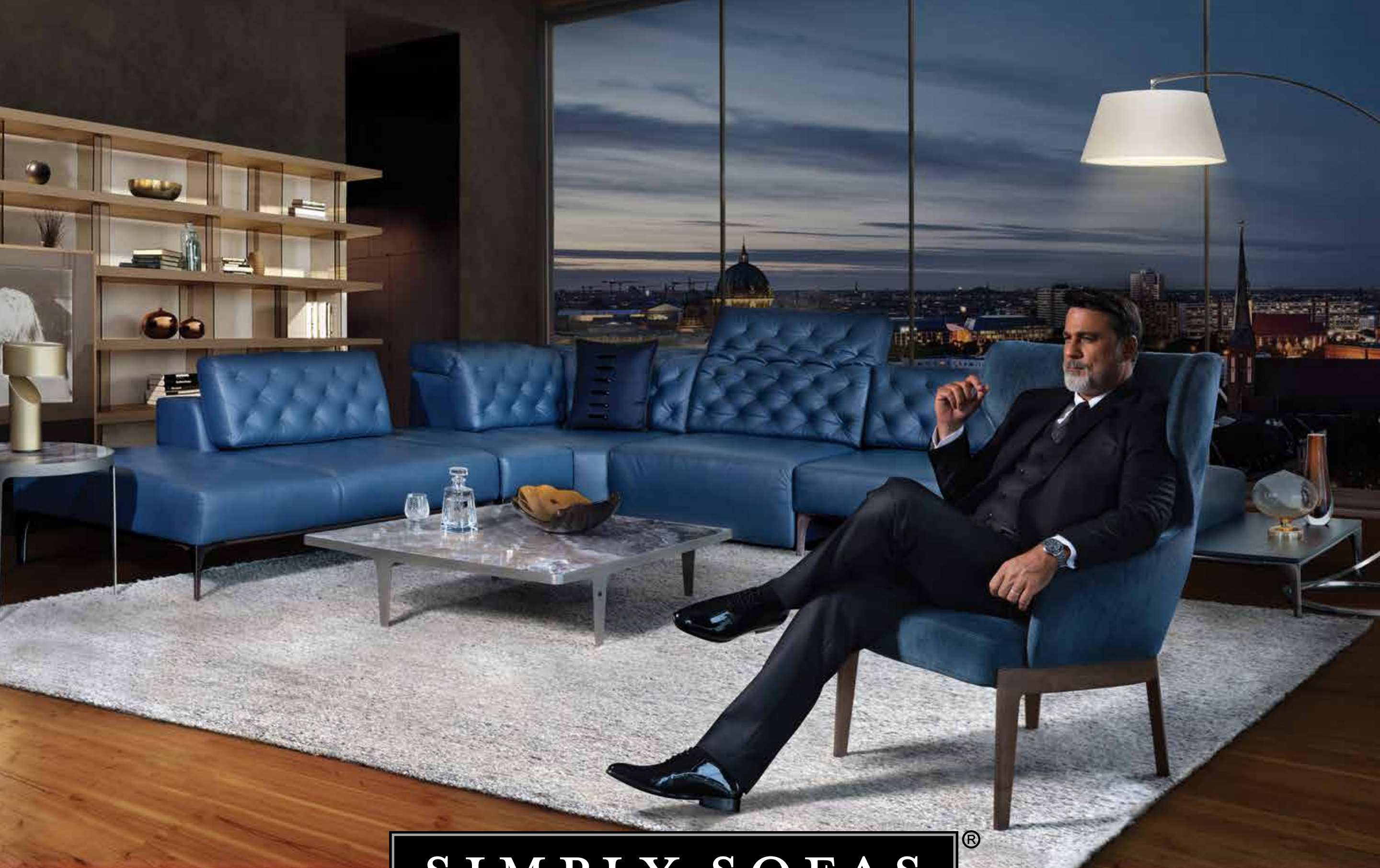
# EuroLuce@SALONE

---

The year's new lighting ideas are first on general display at Milan. Innovation reigns supreme, with the world's biggest makers of lighting systems coming together at Salone.







**SIMPLY SOFAS**®

SO FA, SO GOOD®

## SHOWROOMS

### BANGALORE

Mission Road: 12, Shamarao Compound,  
Mission Road Cross.

Call: (080) 221 23355/222 32223, 98861  
59999

Email: sofasogood@simplysofas.in

Mekhri Circle: 4/2, Bellary Road,  
Sadashivnagar, diag. opp. Palace Grounds.

Call: (080) 236 11415 / 236 17171  
99023 09999

Email: sofasogoodblr@simplysofas.in

### CHENNAI

15, Khader Nawaz Khan Road,  
Nungambakkam.

Call: 95515 66666, 99401 49999,  
90948 66666

Email: chennai@simplysofas.in

### COIMBATORE

13/1 Circuit House Road, Behind  
HDFC House, Race Course.

Call: 95979 99996

Landline: 0422-427 6666

Email: coimbatore@simplysofas.in

### KOCHI

2/296, Opp. Hotel Wyte Fort,  
NH 47 Bypass, Kundanoor,  
Maradu P.O. Ernakulam

Call: (0484) 230 7777, 230 2111,  
90480 16666, 95676 09999

Email: kerala@simplysofas.in

*Follow us for the latest updates  
on trends and ideas*

simplysofas.in

